



FLAT DISPLAY TECHNOLOGY



This product is RoHS compliant

§ BRIEF SPECIFICATION §

FDT Tech Module No: **LOF121X05x-00R**

Description: **12.1" Digital TFT-LCD Module**

SPEC No.: **SAS-1509002**

Version: **1.1**

Issue Date: **February 24, 2021**

※ This specification contains 6 pages including the cover and appendix.



Features

- 12.1" (1024x768) Digital TFT LCD
- Aspect Ratio: 4:3
- Input Signal VGA / DVI-D/ HDMI 1.3a
- Maximum Support Resolution 1920x1080
- Stereo Audio Amplifier, Output 2W@4Ω Speaker
- Audio Line-In
- 5 Wires Resistive Touch Panel
- 5 Key Buttons Control
- 8 Language OSD Menu
- LED Backlight
- Single Operation Voltage +12V

Applications

- Industrial
- Medical Environment
- Instrument Display
- Kiosk
- Security
- Signage
- Office Electronics
- Home Application
- Educate Application



Specifications

LCD	
Panel Size	12.1"
Resolution (Pixels)	1024x768
Color	16.2M
Luminance without RTP	500 cd/m ²
Luminance (RTP)	400 cd/m ²
Contrast Ratio	700
Viewing Angle	80(L) / 80(R) / 70(T) / 70(B)
LED Life Time (Min.)	30K hours
Power Requirement	
Power Input (DC Jack 2.1 φ)	+12 Vdc
PowerConsumption@+12V	10.1Watts (@Without Amplifier)
Touch Screen	
Resistive Type	USB / RS232 Interface
Resistive Type Support OS	Windows / Linux / DOS / Mac / QNX

Input Signal					
VGA	D-Sub15				
DVI	DVI-D				
HDMI	1.3a				
Audio					
Amplifier	1W@8Ω / 2W@4Ω				
Line-In	Stereo Input Phone Jack φ 3.5				
Controls					
Key	5 Buttons				
Serial Remote Control	RS232 (Option)				
Mechanical					
Mounting Type	Panel / VESA 100 x 100 Mount				
Environment					
Temperature Range	Without RTP	Operating	-20 ~ +70℃	5W RTP	-10 ~ +70℃
		Storage	-30 ~ +80℃		-30 ~ +80℃
High Temperature & High Humidity (Non-condensing)	Operating		40℃ 90%		40℃ 90%

Order Information

■ Unit

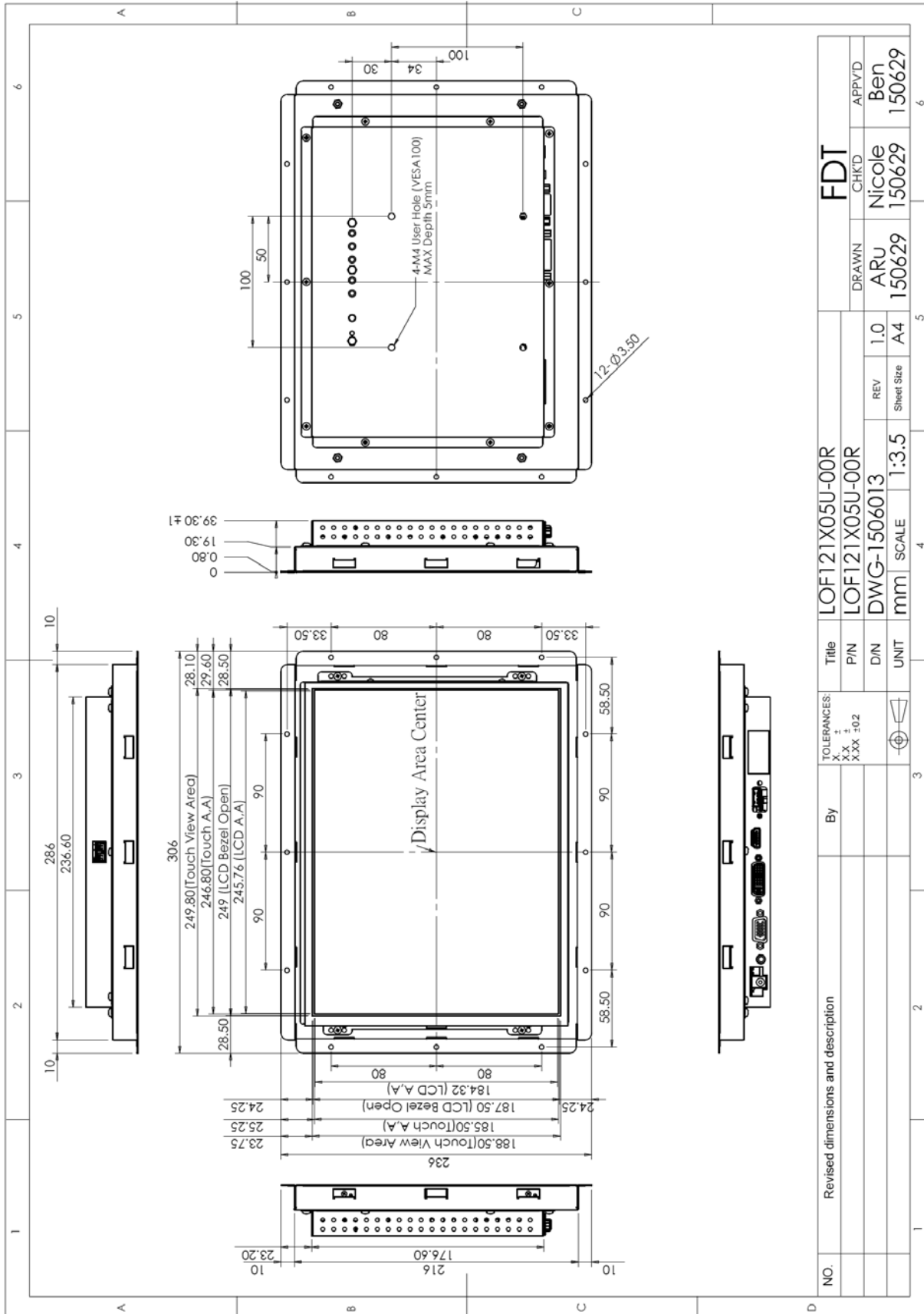
Item	LOF121X050-00R	LOF121X05U-00R	LOF121X05R-00R
VGA	◎	◎	◎
DVI	◎	◎	◎
HDMI	◎	◎	◎
Touch Panel Type	-	5W Resistive	5W Resistive
Touch Screen Interface	-	USB	RS232
Audio Amplifier	◎	◎	◎
Audio Line-In	◎	◎	◎
5 Keys	◎	◎	◎
Condition	Standard	Standard	Non-standard

■ Customized

Function	Item		Remark
Audio	Head Phone For HDMI (Output)		
Serial Remote Control	RS232 (DB9)		
Power Input Connector	Terminal Socket 2P 5.08mm (on Module)		
	Terminal plug 2P 5.08mm (For Cable)		Matching Terminal Socket

Note: Special order condition will apply to non-standard items and pls contact salespersons in FDT.

Dimension



Accessories (Option)

Before you begin installing the Open Frame, please make sure that the following materials have been shipped:



- A. AC to DC Adapter (L:1500mm,100-240V_{AC} 50-60Hz to +12V_{DC} @ 3.3A, ϕ 2.1)
- B. Power Cord (L:1800mm, Plug Type B for USA)
- C. HDMI Cable (L:1800mm)
- D. DVI Cable (L:1800mm)
- E. VGA Cable (L:1800mm)
- F. USB Cable (L:1800mm)
- G. RS232 Cable (L:1800mm, Null Modem)
- H. AUDIO Cable (L:1800mm)
- I. Touch Screen Driver CD Disk / User Manual
- J. Speaker (2.5W @ 4 Ω L:400mm *2 Pieces)
- K. Mount Clamp and Screw *12 Pieces