



FLAT DISPLAY TECHNOLOGY



This product is RoHS compliant

§ BRIEF SPECIFICATION §

FDT Tech Module No: **LOF150X05x-30R**

Description: **15" Digital TFT-LCD Module**

SPEC No.: **SAS-1506005**

Version: **1.3**

Issue Date: **January 22, 2024**

※ This specification contains 7 pages including the cover and appendix.



Features

- Full Flat Panel Design
- 15" (1024x768) Digital TFT LCD
- Aspect Ratio: 4:3
- Input Signal VGA / DVI-D/ HDMI 1.3a
- Maximum Support Resolution 1920x1080
- Stereo Audio Amplifier, Output 2W@4Ω Speaker
- Audio Line-In
- 5 Wires Resistive Touch Panel
- 5 Key Buttons Control
- 9 Languages OSD Menu
- LED Backlight
- Single Operation Voltage +12V

Applications

- Industrial
- Medical Environment
- Instrument Display
- Kiosk
- Security
- Signage
- Office Electronics
- Home Application
- Educate Application



Specifications

LCD	
Panel Size	15"
Resolution (Pixels)	1024x768
Color	16.7M
Luminance without Membrane+TP	500 cd/m ²
Luminance (Membrane+RTP)	388 cd/m ²
Contrast Ratio	2500
View Angle	88(L) / 88(R) / 88(T) / 88(B)
LED Life Time (Min.)	50K hours
Power Requirement	
Power Input (DC Jack 2.1 φ)	+12 Vdc
Power Consumption@+12V	12.3 Watts (@Without Amplifier)
Touch Screen	
Resistive Type	USB / RS232 Interface
Resistive Type Support OS	Windows / Linux / DOS / Mac / QNX

Input Signal		
VGA	D-Sub15	
DVI	DVI-D	
HDMI	1.3a	
Audio		
Amplifier	1W@8Ω / 2W@4Ω	
Line-In	Stereo Input Phone Jack φ 3.5	
Controls		
Key	5 Buttons	
Serial Remote Control	RS232 (Option)	
Mechanical		
Construction	Aluminum Front Bezel with Completely Covered Nameplate and SECC steel chassis	
Mounting Type	Panel / VESA 100 x 100 Mount	
Environment		
Temperature Range	Operating	0~+50°C
	Storage	-10~+60°C
High Temperature & High Humidity (Non-condensing)	Operating	+40°C / 85%

Order Information

■ Unit

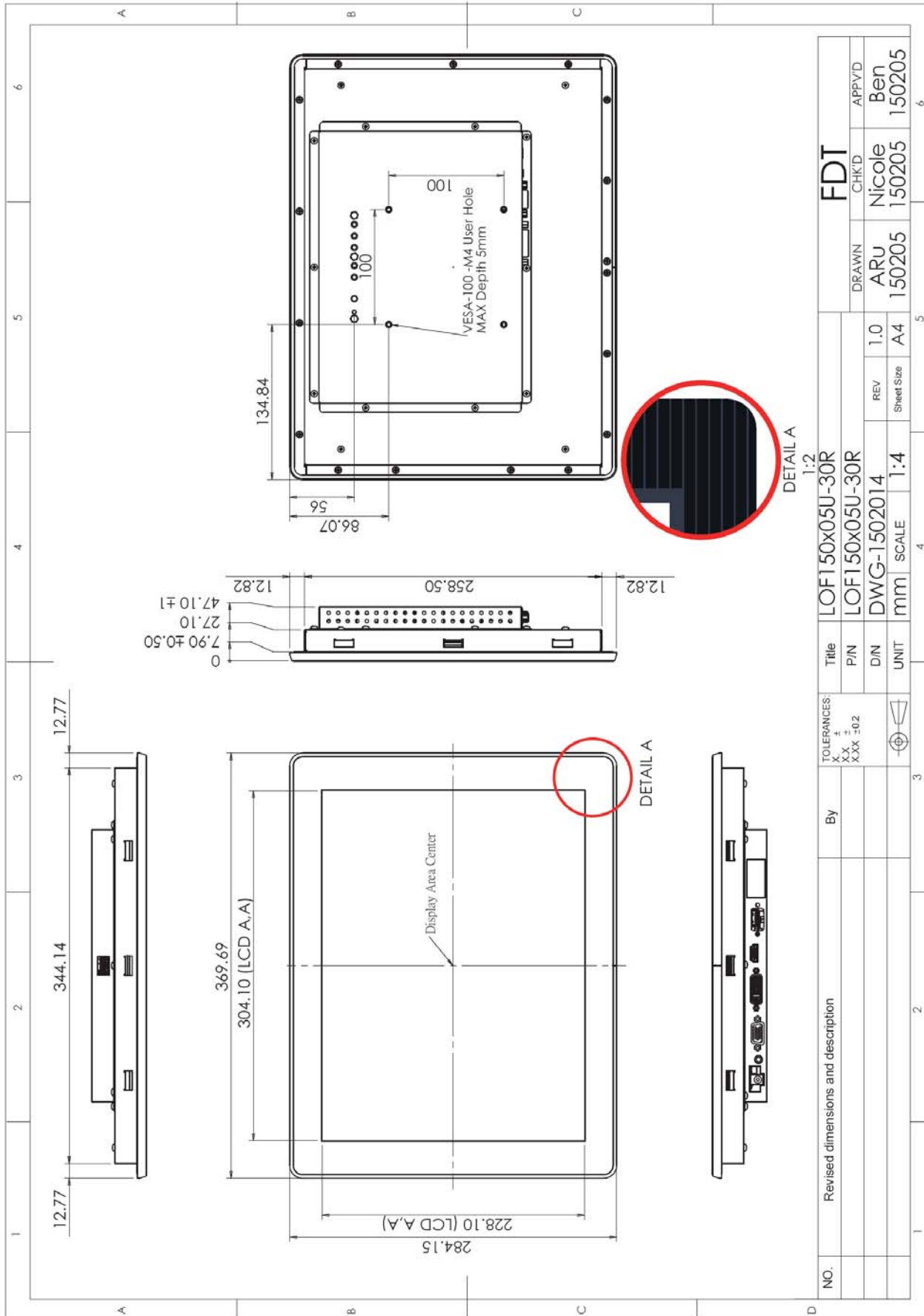
Item	LOF150X05U-30R	LOF150X05R-30R	Unit	Remark
VGA	◎	◎		
DVI	◎	◎		
HDMI	◎	◎		
Touch Panel Type	5W Resistive	5W Resistive		
Touch Screen Interface	USB	RS232		
Audio Amplifier	◎	◎		
Audio Line-In	◎	◎		
5 Keys	◎	◎		
Condition	Standard	Non-standard		

■ Customized

Function	Item		Remark
Audio	Head Phone For HDMI (Output)		
Serial Remote Control	RS232 (DB9)		
Power Input Connector	Terminal Socket 2P 5.08mm (on Module)		
	Terminal plug 2P 5.08mm (For Cable)		Matching Terminal Socket

Note: Special order condition will apply to non-standard items and pls contact salespersons in FDT.

Dimension



Accessories (Option)

Before you begin installing the Open Frame, please make sure that the following materials have been shipped:



A. LASTD12033-FDR



B. LAACD18000-FDR



C. LACABLE068-FDR



D. LACABLE069-FDR



E. LAVGA18000-FDR



F. LAUSB18000-FDR



G. LACABLE045-FDR



H. LACABLE070-FDR



I. LASPKR0004-FDR



J. LASCW00003-FDR

- A. AC to DC Adapter (L:1500mm,100-240V_{AC} 50-60Hz to +12V_{DC} @ 3.3A, ϕ 2.1)
- B. Power Cord (L:1800mm, Plug Type B for USA)
- C. HDMI Cable (L:1800mm)
- D. DVI Cable (L:1800mm)
- E. VGA Cable (L:1800mm)
- F. USB Cable (L:1800mm)
- G. RS232 Cable (L:1800mm, Null Modem)
- H. AUDIO Cable (L:1800mm)
- I. Speaker (2.5W @ 4 Ω L:400mm *2 Pieces)
- J. Mount Clamp and Screw * 12 Pieces



Revision History

NO	Date	Description	Page	Note
0.0	October 2, 2014	· First draft (Tentative)	5	
1.0	February 13, 2020	· Add Orientation Marks of The Viewing Angle	2	
1.1	November 6, 2020	· Improve LCD's brightness & Contrast & View Angle & LED life time.	2	
		· Modify Power Consumption.	2	
1.2	December 31, 2020	· Modify LED life time 70K to 50K	2	
		· Add Customized & Power Input Connector / Cancel "Light Sensor" / Modify Ear phone	2, 3	
1.3	January 22, 2024	· Delete item I. Touch Screen Driver CD Disk / User Manual of Accessories (Option)	5	