



FLAT DISPLAY TECHNOLOGY



This product is RoHS compliant

§ BRIEF SPECIFICATION §

FDT Tech Module No: **LOF150X35x-00R**

Description: **15" Digital TFT-LCD Module**

SPEC No.: **SAS-1404006**

Version: **1.6**

Issue Date: **January 22, 2024**

※ This specification contains 6 pages including the cover and appendix.



Features

- 15" (1024x768) Digital TFT LCD
- Aspect Ratio: 4:3
- Input Signal VGA / DVI-D/ HDMI 1.3a
- Maximum Support Resolution 1920x1080
- Stereo Audio Amplifier, Output 2W@4Ω Speaker
- Audio Line-In
- 5 Wires Resistive Touch Panel
- 5 Key Buttons Control
- 8 Language OSD Menu
- LED Backlight
- Single Operation Voltage +12V

Applications

- Industrial
- Medical Environment
- Instrument Display
- Kiosk
- Security
- Signage
- Office Electronics
- Home Application
- Educate Application



Specifications

LCD	
Panel Size	15"
Resolution (Pixels)	1024x768
Color	16.7M
Luminance without TP	500 cd/m ²
Luminance (RTP)	400 cd/m ²
Contrast Ratio	2500
Viewing Angle	88(L) / 88(R) / 88(T) / 88(B)
LED Life Time (Min.)	70K hours
Power Requirement	
Power Input (DC Jack 2.1 φ)	+12 V _{DC}
PowerConsumption@+12V	12.3 Watts (@Without Amplifier)
Touch Screen	
Resistive Type	USB / RS232 Interface
Resistive Type Support OS	Windows / Linux / DOS / Mac / QNX

Input Signal			
VGA	D-Sub15		
DVI	DVI-D		
HDMI	1.3a		
Audio			
Amplifier	1W@8Ω / 2W@4Ω		
Line-In	Stereo Input Phone Jack φ 3.5		
Controls			
Key	5 Buttons		
Serial Remote Control	RS232 (Option)		
Mechanical			
Mounting Type	Panel / VESA 100 x 100 Mount		
Environment			
		Without RTP	5W RTP
Temperature Range	Operating	-20 ~ +70°C	-10 ~ +70°C
	Storage	-30 ~ +70°C	-30 ~ +70°C
High Temperature & High Humidity (Non-condensing)	Operating	+40°C / 85%	+40°C / 85%

Order Information

■ Unit

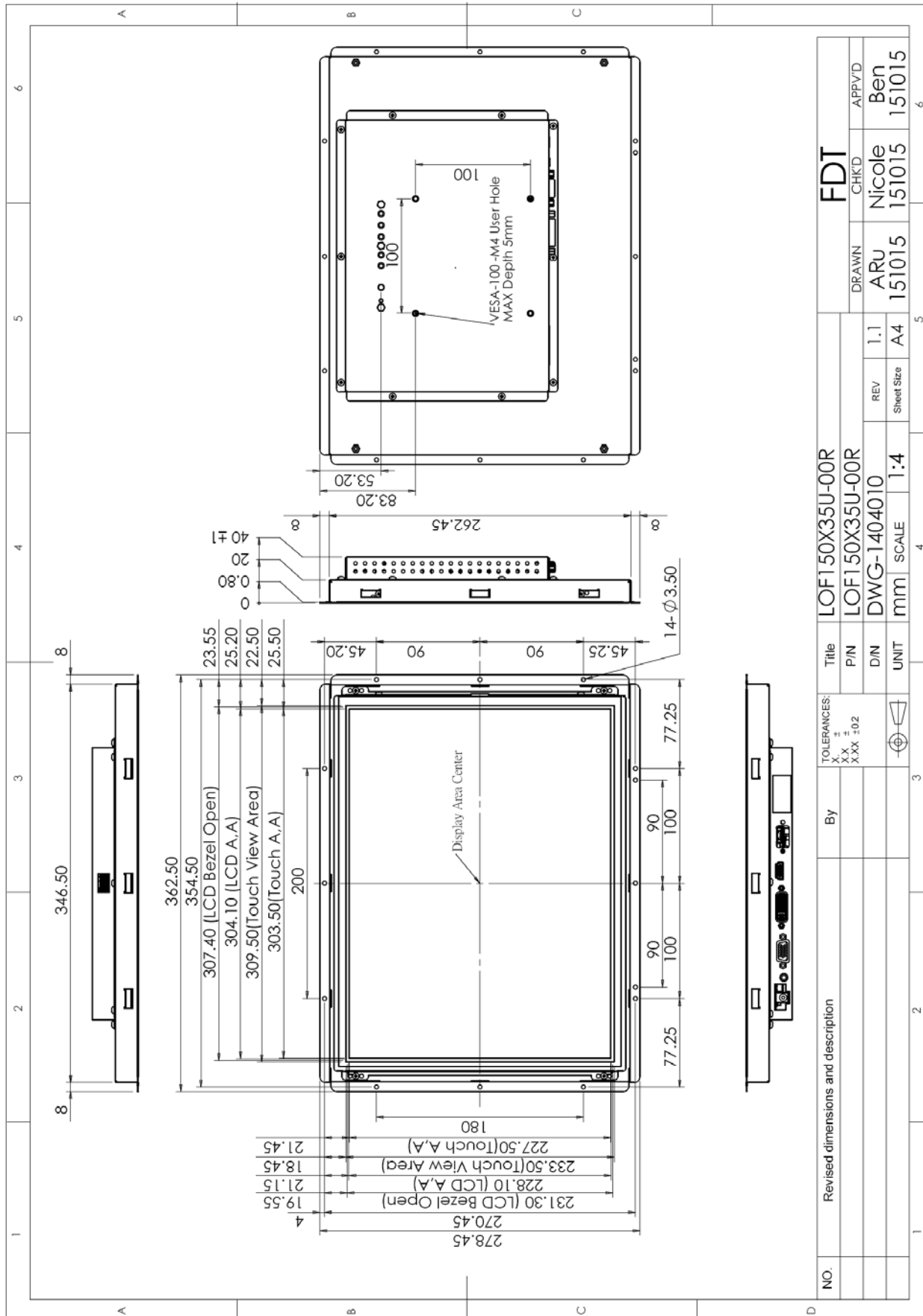
Item	LOF150X350-00R	LOF150X35U-00R	LOF150X35R-00R
VGA	⊙	⊙	⊙
DVI	⊙	⊙	⊙
HDMI	⊙	⊙	⊙
Touch Panel Type	-	5W Resistive	5W Resistive
Touch Screen Interface	-	USB	RS232
Audio Amplifier	⊙	⊙	⊙
Audio Line-In	⊙	⊙	⊙
5 Keys	⊙	⊙	⊙
Condition	Standard	Standard	Non-standard

■ Customized

Function	Item		Remark
Audio	Head Phone For HDMI (Output)		
Serial Remote Control	RS232 (DB9)		
Power Input Connector	Terminal Socket 2P 5.08mm (on Module)		
	Terminal plug 2P 5.08mm (For Cable)		Matching Terminal Socket

Note: Special order condition will apply to non-standard items and pls contact salespersons in FDT.

Dimension



Accessories (Option)

Before you begin installing the Open Frame, please make sure that the following materials have been shipped:



A. LASTD12033-FDR



B. LAACD18000-FDR



C. LACABLE068-FDR



D. LACABLE069-FDR



E. LAVGA18000-FDR



F. LAUSB18000-FDR



G. LACABLE045-FDR



H. LACABLE070-FDR



I. LASPKR0004-FDR



J. LASCW00003-FDR

- A. AC to DC Adapter (L:1500mm,100-240V_{AC} 50-60Hz to +12V_{DC} @ 3.3A, ϕ 2.1)
- B. Power Cord (L:1800mm, Plug Type B for USA)
- C. HDMI Cable (L:1800mm)
- D. DVI Cable (L:1800mm)
- E. VGA Cable (L:1800mm)
- F. USB Cable (L:1800mm)
- G. RS232 Cable (L:1800mm, Null Modem)
- H. AUDIO Cable (L:1800mm)
- I. Speaker (2.5W @ 4 Ω L:400mm *2 Pieces)
- J. Mount Clamp and Screw *12 Pieces