



FLAT DISPLAY TECHNOLOGY



This product is RoHS compliant

§ BRIEF SPECIFICATION §

FDT Tech Module No: **LOF150XxxP-x0R**

Description: **15" Digital TFT-LCD Module**

SPEC No.: **SAS-1410002**

Version: **1.3**

Issue Date: **January 22, 2024**

※ This specification contains 7 pages including the cover and appendix.



Features

- Full Flat Panel Design
- 15" (1024x768) Digital TFT LCD
- Aspect Ratio: 4:3
- Input Signal VGA / DVI-D/ HDMI 1.3a
- Maximum Support Resolution 1920x1080
- Stereo Audio Amplifier, Output 2W@4Ω Speaker
- Audio Line-In
- 2 Points Projected Capacitive Touch
- 5 Key Buttons Control
- 9 Language OSD Menu
- LED Backlight
- Single Operation Voltage +12V

Applications

- Industrial
- Medical Environment
- Instrument Display
- Kiosk
- Security
- Signage
- Office Electronics
- Home Application
- Educate Application



Specifications

LCD	
Panel Size	15"
Resolution (Pixels)	1024x768
Color	16.7M
Luminance without TP	500 cd/m ²
Luminance (PCT)	425 cd/m ²
Contrast Ratio	2500
View Angle	88(L) / 88(R) / 88(T) / 88(B)
LED Life Time (Typ.)	70K hours
Power Requirement	
Power Input (DC Jack 2.1 ϕ)	+12 Vbc
Power Consumption@+12V	12.3 Watts (@Without Amplifier)
Touch Screen	
Projected Capacitive Touch	USB Interface (2 Points)
Projected Capacitive Touch Support OS	Windows / Linux

Input Signal	
VGA	D-Sub15
DVI	DVI-D
HDMI	1.3a
Audio	
Amplifier	1W@8Ω / 2W@4Ω
Line-In	Stereo Input Phone Jack ϕ 3.5
Controls	
Key	5 Buttons
Serial Remote Control	RS232 (Option)
Mechanical	
Construction	Aluminum Front Bezel with Completely Covered Glass and SECC steel chassis
Mounting Type	Panel / VESA 100 x 100 Mount
Environment	
Operating Temp. PCT	-20 ~ +70°C
Storage Temp. PCT	-20 ~ +70°C
High Temperature & High Humidity (Non-condensing)	+40°C / 90%

Order Information

■ Unit

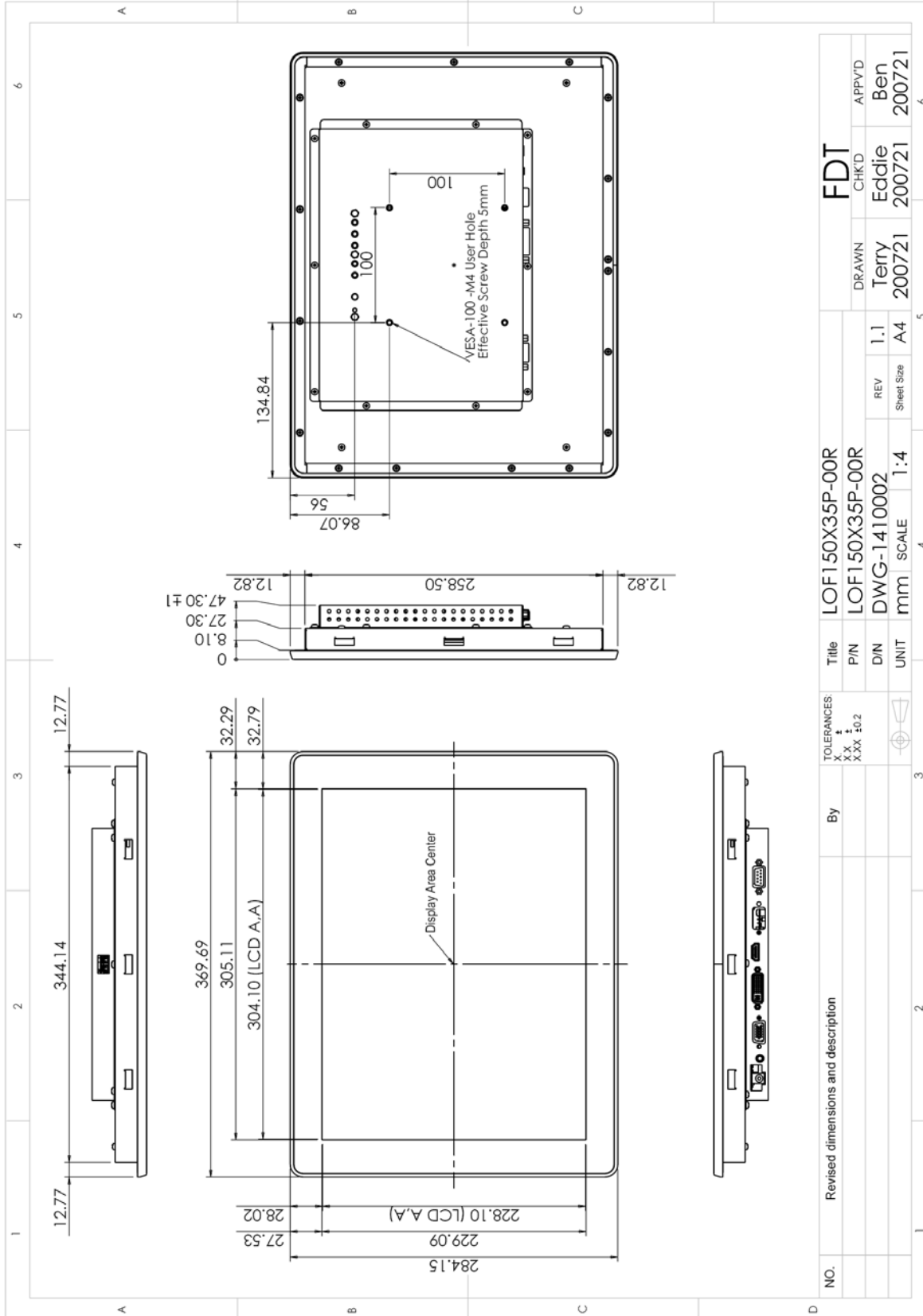
Parameter	LOF150X35P-00R	LOF150X1DP-10R	Unit	Remark
VGA	⊙	⊙		
DVI	⊙	⊙		
HDMI	⊙	⊙		
Touch Panel Type	Projected Capacitive Touch	Projected Capacitive Touch		
Touch Screen Interface	USB	USB		
Audio Amplifier	⊙	⊙		
Audio Line-In	⊙	⊙		
5 Keys	⊙	⊙		
Waterproof	-	IP54		
Condition	Standard	Non-standard		

■ Customized

Function	Item		Remark
Audio	Head Phone For HDMI (Output)		
Serial Remote Control	RS232 (DB9)		
Power Input Connector	Terminal Socket 2P 5.08mm (on Module)		
	Terminal plug 2P 5.08mm (For Cable)		Matching Terminal Socket

Note: Special order condition will apply to non-standard items and pls contact salespersons in FDT.

Dimension



Accessories (Option)

Before you begin installing the Open Frame, please make sure that the following materials have been shipped:



A. LASTD12033-FDR



B. LAACD18000-FDR



C. LACABLE068-FDR



D. LACABLE069-FDR



E. LAVGA18000-FDR



F. LAUSB18000-FDR



G. LACABLE045-FDR



H. LACABLE070-FDR



I. LASPKR0004-FDR



J. LASCW00003-FDR

- A. AC to DC Adapter (L:1500mm,100-240V_{AC} 50-60Hz to +12V_{DC} @ 3.3A, ϕ 2.1)
- B. Power Cord (L:1800mm, Plug Type B for USA)
- C. HDMI Cable (L:1800mm)
- D. DVI Cable (L:1800mm)
- E. VGA Cable (L:1800mm)
- F. USB Cable (L:1800mm)
- G. RS232 Cable (L:1800mm, Null Modem)
- H. AUDIO Cable (L:1800mm)
- I. Speaker (2.5W @ 4 Ω L:400mm *2 Pieces)
- K. Mount Clamp and Screw *12 Pieces



Revision History

NO	Date	Description	Page	Note
0.0	October 2, 2014	· First draft (Tentative)	5	
1.0	February 13, 2020	· Add Orientation Marks of The Viewing Angle	2	
1.1	November 4, 2020	· Improve LCD's brightness & Contrast & View Angle & LED life time.	2	
		· Modify Power Consumption.	2	
1.2	December 30, 2020	· Add Customized & Power Input Connector Cancel "Light Sensor" / Modify Ear phone	3	
1.3	January 22, 2024	· Delete item I. Touch Screen Driver CD Disk / User Manual of Accessories (Option)	5	