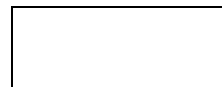


**8" SVGA****High brightness color TFT-LCD module****AGL model code : VM08B1 V8****Date: May. 30<sup>th</sup>, 2022****Version: 01****Note: This specification is subject to change without notice****Customer :****Approved by :****Date :****Approved****Prepared****Date:****Date:**

RECORD OF REVISION

Version and Date	Page	Old description	New description	Remark																																																														
0.1 2012/05/22	All	First Edition for customer																																																																
0.2 2014/07/09	9	<p>3.1.3. Backlight Driving Conditions-</p> <table border="1"> <thead> <tr> <th rowspan="2">Item</th> <th rowspan="2">Symbol</th> <th colspan="3">Values</th> <th rowspan="2">Unit</th> <th rowspan="2">Remark</th> </tr> <tr> <th>Min.</th> <th>Typ.</th> <th>Max.</th> </tr> </thead> <tbody> <tr> <td>Voltage for LED backlight</td> <td>V<sub>L</sub></td> <td>-</td> <td>19.8</td> <td>21.5</td> <td>V</td> <td>Note 1</td> </tr> <tr> <td>Current for LED backlight</td> <td>I<sub>L</sub></td> <td>-</td> <td>360</td> <td>-</td> <td>mA</td> <td>-</td> </tr> <tr> <td>LED life time</td> <td>-</td> <td>-</td> <td>TBD</td> <td>-</td> <td>Hr</td> <td>Note 2</td> </tr> </tbody> </table> <p>Note 1: The LED Supply Voltage is defined by the number of LED at Ta=25°C and IL=360mA.</p> <p>Note 2: The "LED life time" is defined as the module brightness decrease to 50% original brightness at Ta=25°C and IL=360mA. The LED lifetime could be decreased if operating IL is larger than 360 mA.</p>	Item	Symbol	Values			Unit	Remark	Min.	Typ.	Max.	Voltage for LED backlight	V <sub>L</sub>	-	19.8	21.5	V	Note 1	Current for LED backlight	I <sub>L</sub>	-	360	-	mA	-	LED life time	-	-	TBD	-	Hr	Note 2	<p>3.1.3. Backlight Driving Conditions-</p> <table border="1"> <thead> <tr> <th rowspan="2">Item</th> <th rowspan="2">Symbol</th> <th colspan="3">Values</th> <th rowspan="2">Unit</th> <th rowspan="2">Remark</th> </tr> <tr> <th>Min.</th> <th>Typ.</th> <th>Max.</th> </tr> </thead> <tbody> <tr> <td>Voltage for LED backlight</td> <td>V<sub>L</sub></td> <td>-</td> <td>19.8</td> <td>21.5</td> <td>V</td> <td>Note 1</td> </tr> <tr> <td>Current for LED backlight</td> <td>I<sub>L</sub></td> <td>-</td> <td>240</td> <td>-</td> <td>mA</td> <td>-</td> </tr> <tr> <td>LED life time</td> <td>-</td> <td>-</td> <td>4000</td> <td>-</td> <td>Hr</td> <td>Note 2</td> </tr> </tbody> </table> <p>Note 1: The LED Supply Voltage is defined by the number of LED at Ta=25°C and IL=240mA.</p> <p>Note 2: The "LED life time" is defined as the module brightness decrease to 50% original brightness at Ta=25°C and IL=240mA. The LED lifetime could be decreased if operating IL is larger than 240 mA.</p>	Item	Symbol	Values			Unit	Remark	Min.	Typ.	Max.	Voltage for LED backlight	V <sub>L</sub>	-	19.8	21.5	V	Note 1	Current for LED backlight	I <sub>L</sub>	-	240	-	mA	-	LED life time	-	-	4000	-	Hr	Note 2	
Item	Symbol	Values			Unit	Remark																																																												
		Min.	Typ.	Max.																																																														
Voltage for LED backlight	V <sub>L</sub>	-	19.8	21.5	V	Note 1																																																												
Current for LED backlight	I <sub>L</sub>	-	360	-	mA	-																																																												
LED life time	-	-	TBD	-	Hr	Note 2																																																												
Item	Symbol	Values			Unit	Remark																																																												
		Min.	Typ.	Max.																																																														
Voltage for LED backlight	V <sub>L</sub>	-	19.8	21.5	V	Note 1																																																												
Current for LED backlight	I <sub>L</sub>	-	240	-	mA	-																																																												
LED life time	-	-	4000	-	Hr	Note 2																																																												
0.3 2022/05/30	4 9	<p>Backlight power: 4.752W</p> <p>3.1.3. Backlight Driving Conditions-</p> <table border="1"> <thead> <tr> <th rowspan="2">Item</th> <th rowspan="2">Symbol</th> <th colspan="3">Values</th> <th rowspan="2">Unit</th> <th rowspan="2">Remark</th> </tr> <tr> <th>Min.</th> <th>Typ.</th> <th>Max.</th> </tr> </thead> <tbody> <tr> <td>Voltage for LED backlight</td> <td>V<sub>L</sub></td> <td>-</td> <td>19.8</td> <td>21.5</td> <td>V</td> <td>Note 1</td> </tr> <tr> <td>Current for LED backlight</td> <td>I<sub>L</sub></td> <td>-</td> <td>240</td> <td>-</td> <td>mA</td> <td>-</td> </tr> <tr> <td>LED life time</td> <td>-</td> <td>-</td> <td>4000</td> <td>-</td> <td>Hr</td> <td>Note 2</td> </tr> </tbody> </table> <p>Note 1: The LED Supply Voltage is defined by the number of LED at Ta=25°C and IL=240mA.</p> <p>Note 2: The "LED life time" is defined as the module brightness decrease to 50% original brightness at Ta=25°C and IL=240mA. The LED lifetime could be decreased if operating IL is larger than 240 mA.</p>	Item	Symbol	Values			Unit	Remark	Min.	Typ.	Max.	Voltage for LED backlight	V <sub>L</sub>	-	19.8	21.5	V	Note 1	Current for LED backlight	I <sub>L</sub>	-	240	-	mA	-	LED life time	-	-	4000	-	Hr	Note 2	<p>Backlight power: 2.88W</p> <p>3.1.3. Backlight Driving Conditions-</p> <table border="1"> <thead> <tr> <th rowspan="2">Item</th> <th rowspan="2">Symbol</th> <th colspan="3">Values</th> <th rowspan="2">Unit</th> <th rowspan="2">Remark</th> </tr> <tr> <th>Min.</th> <th>Typ.</th> <th>Max.</th> </tr> </thead> <tbody> <tr> <td>Voltage for LED backlight</td> <td>V<sub>L</sub></td> <td>-</td> <td>18</td> <td>-</td> <td>V</td> <td>Note 1</td> </tr> <tr> <td>Current for LED backlight</td> <td>I<sub>L</sub></td> <td>-</td> <td>160</td> <td>-</td> <td>mA</td> <td>-</td> </tr> <tr> <td>LED life time</td> <td>-</td> <td>-</td> <td>100K</td> <td>-</td> <td>Hr</td> <td>Note 2</td> </tr> </tbody> </table> <p>Note 1: The LED Supply Voltage is defined by the number of LED at Ta=25°C and IL=160mA.</p> <p>Note 2: The "LED life time" is defined as the module brightness decrease to 50% original brightness at Ta=25°C and IL=160mA. The LED lifetime could be decreased if operating IL is larger than 160 mA.</p>	Item	Symbol	Values			Unit	Remark	Min.	Typ.	Max.	Voltage for LED backlight	V <sub>L</sub>	-	18	-	V	Note 1	Current for LED backlight	I <sub>L</sub>	-	160	-	mA	-	LED life time	-	-	100K	-	Hr	Note 2	
Item	Symbol	Values			Unit	Remark																																																												
		Min.	Typ.	Max.																																																														
Voltage for LED backlight	V <sub>L</sub>	-	19.8	21.5	V	Note 1																																																												
Current for LED backlight	I <sub>L</sub>	-	240	-	mA	-																																																												
LED life time	-	-	4000	-	Hr	Note 2																																																												
Item	Symbol	Values			Unit	Remark																																																												
		Min.	Typ.	Max.																																																														
Voltage for LED backlight	V <sub>L</sub>	-	18	-	V	Note 1																																																												
Current for LED backlight	I <sub>L</sub>	-	160	-	mA	-																																																												
LED life time	-	-	100K	-	Hr	Note 2																																																												



# Contents

1. General Specifications
2. Pin Assignment
  - 2.1. TFT LCD Panel Driving Section
  - 2.2. Backlight Unit Section
3. Operation Specifications
  - 3.1. Absolute Maximum Rating
    - 3.1.1. Typical Operation Conditions
    - 3.1.2. Current Consumption
    - 3.1.3. Backlight Driving Conditions
  - 3.2. Power Sequence
    - 3.2.1. Power on
    - 3.2.2. Power off
  - 3.3. Timing Characteristics
    - 3.3.1. AC Electrical Characteristics
    - 3.3.2. Timing
    - 3.3.3. Timing Diagram
4. Optical Specifications
5. Reliability Test Items
6. General Precautions
  - 6.1. Safety
  - 6.2. Handling
  - 6.3. Static Electricity
  - 6.4. Storage
  - 6.5. Cleaning
7. Mechanical Drawing



## 1. General Specifications

No.	Item	Specification	Remark
1	LCD size	8.0 inch(Diagonal)	
2	Driver element	a-Si TFT active matrix	
3	Resolution	800 × 3(RGB) × 600	
4	Display mode	Normally White, Transmissive	
5	Dot pitch	0.0675(W) × 0.2025(H) mm	
6	Active area	162.0(W) × 121.5(H) mm	
7	Module size	183.0(W) × 141.0(H) × 5.6(D) mm	Note 1
8	Surface treatment	Anti-Glare	
9	Color arrangement	RGB-stripe	
10	Interface	Digital	
11	Backlight power consumption	2.88W (Typ.)	
12	Panel power consumption	0.356W (Typ.)	
13	Weight	258g (Typ.)	

Note 1: Refer to Mechanical Drawing.



## 2. Pin Assignment

### 2.1. TFT LCD Panel Driving Section

1. FPC Connector is used for the module electronics interface. The recommended model is FH12A-50S-0.5SH manufactured by Hirose.
2. LED Light Bar Connector is used for the integral backlight system. The recommended model is BHSR-02VS-1 manufactured by JST.

Pin No	Symbol	I/O	Function	Remark
1	NC		No connection	
2	NC		No connection	
3	NC		No connection	
4	NC		No connection	
5	GND	P	Power ground	
6	V <sub>COM</sub>	I	Common voltage	
7	V <sub>CC</sub>	P	Power for Digital circuit	
8	MODE	I	DE/SYNC mode select	Note 3
9	DE	I	Data Input Enable	
10	VS	I	Vertical Sync Input	
11	HS	I	Horizontal Sync Input	
12	B7	I	Blue data (MSB)	
13	B6	I	Blue data	
14	B5	I	Blue data	
15	B4	I	Blue data	
16	B3	I	Blue data	
17	B2	I	Blue data	
18	B1	I	Blue data	
19	B0	I	Blue data (LSB)	
20	G7	I	Green data (MSB)	
21	G6	I	Green data	
22	G5	I	Green data	
23	G4	I	Green data	
24	G3	I	Green data	
25	G2	I	Green data	
26	G1	I	Green data	



27	G0	I	Green data (LSB)	
28	R7	I	Red data (MSB)	
29	R6	I	Red data	
30	R5	I	Red data	
31	R4	I	Red data	
32	R3	I	Red data	
33	R2	I	Red data	
34	R1	I	Red data	
35	R0	I	Red data (LSB)	
36	GND	P	Power ground	
37	DCLK	I	Sample clock	
38	GND	P	Power ground	
39	L/R	I	Right/Left selection	Note 2,5
40	U/D	I	Up/down selection	Note 2,5
41	V <sub>GH</sub>	P	Gate ON voltage	
42	V <sub>GL</sub>	P	Gate OFF voltage	
43	AV <sub>DD</sub>	P	Power for Analog circuit	
44	RESET	I	Global reset pin.	Note 1
45	NC		No connection	
46	V <sub>COM</sub>	I	Common voltage	
47	DITHB	I	Dithering function	Note 4
48	GND	P	Power ground	
49	NC		No connection	
50	NC		No connection	

I: input, O: output, P: Power

Note 1: Global reset pin. Active Low to enter Reset State. Suggest to connecting with an RC reset circuit for stability. Normally pull high.

Note 2: Selection of scanning mode

Setting of scan control input		Scanning direction
U/D	R/L	
GND	V <sub>CC</sub>	Up to down, left to right
V <sub>CC</sub>	GND	Down to up, right to left
GND	GND	Up to down, right to left
V <sub>CC</sub>	V <sub>CC</sub>	Down to up, left to right



Note 3: DE/SYNC mode select, Normally pull high.

H: DE mode.

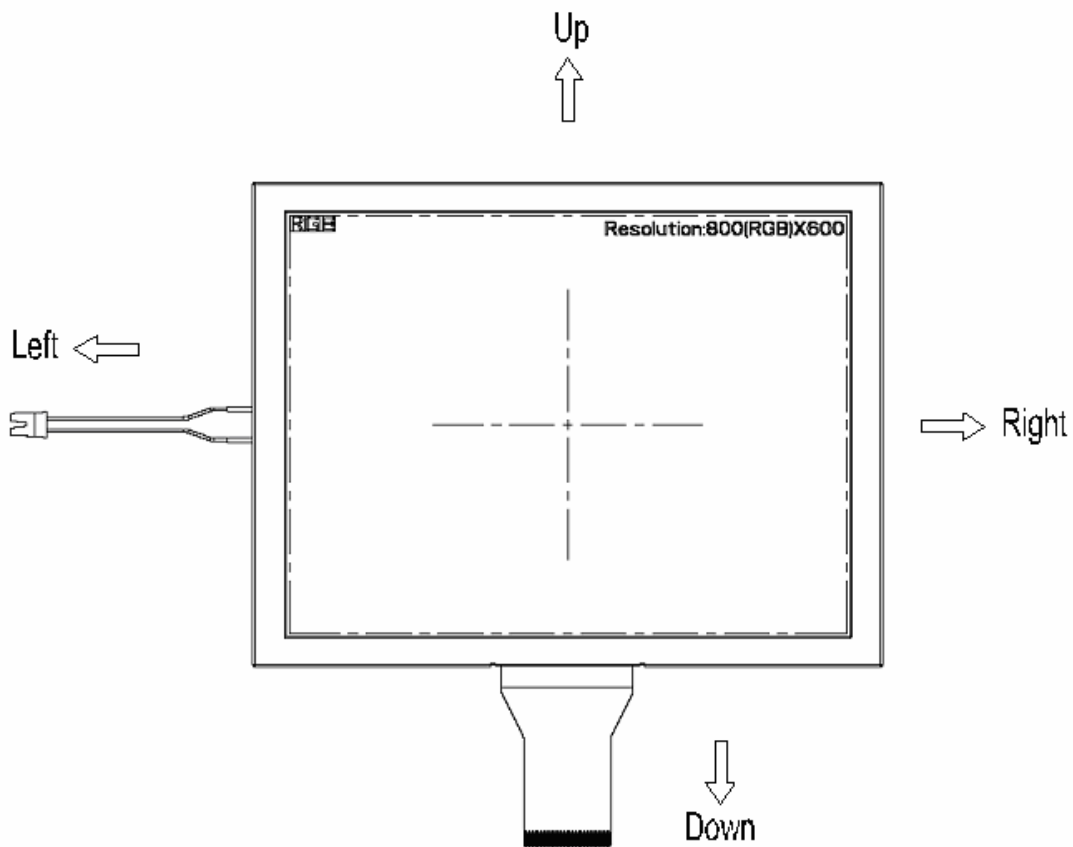
L: HS/VS mode.

Note4: Dithering function enable control. Normally pull high.

DITHB="1", Disable internal dithering function. For 18bit RGB interface, connect two LSB bits of all the R/G/B data buses to GND.

DITHB="0", Enable internal dithering function, For TTL 24bit parallel RGB image data input.

Note 5: Definition of scanning direction. Refer to the figure as below:



## 2.2. Backlight Unit Section

Pin No.	Symbol	I/O	Function	Remark
1	V <sub>LED+</sub>	P	Power for LED backlight anode	Red
2	V <sub>LED-</sub>	P	Power for LED backlight cathode	Black



### 3. Operation Specifications

#### 3.1. Absolute Maximum Rating

(GND=AV<sub>SS</sub>=0V, Note 1)

Item	Symbol	Values		Unit	Remark
		Min.	Max.		
Power voltage	V <sub>CC</sub>	-0.3	5.0	V	
	AV <sub>DD</sub>	-0.5	13.5	V	
	V <sub>GH</sub>	13.0	19.0	V	
	V <sub>GL</sub>	-12.0	-2.0	V	
	V <sub>GH</sub> -V <sub>GL</sub>	-	31.0	V	
Operation temp.	T <sub>OP</sub>	-20	70	°C	
Storage temp.	T <sub>ST</sub>	-30	80	°C	
LED Forward Current	I <sub>F</sub>	-	120	mA	each LED

Note 1: The absolute maximum rating values of this product are not allowed to be exceeded at any times. Should a module be used with any of the absolute maximum ratings exceeded, the characteristics of the module may not be recovered, or in an extreme case, the module may be permanently destroyed.





### 3.1.1 Typical Operation Condition

(GND=AV<sub>SS</sub>=0V, Note 1)

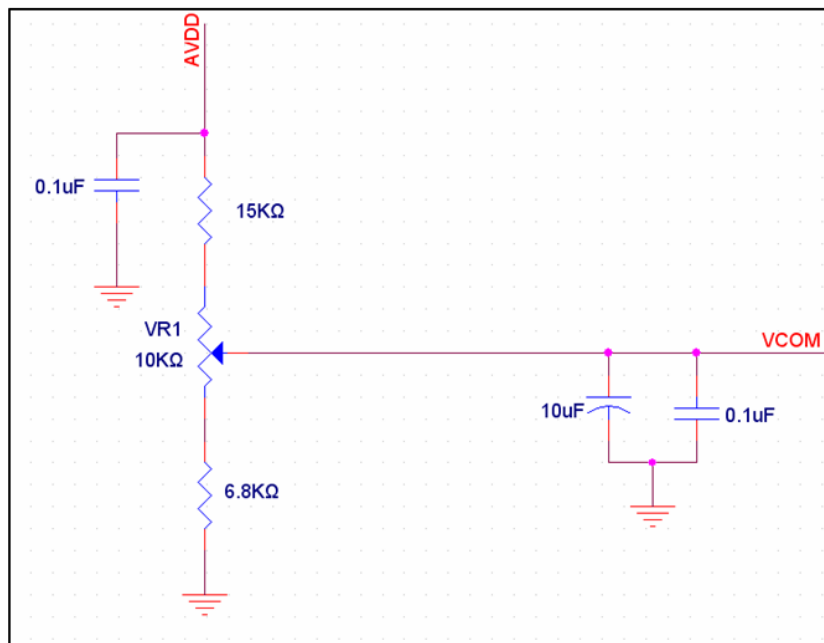
Item	Symbol	Values			Unit	Remark
		Min.	Typ.	Max.		
Power voltage	V <sub>CC</sub>	3.0	3.3	3.6	V	Note 2
	AV <sub>DD</sub>	10.2	10.4	10.6	V	
	V <sub>GH</sub>	15.3	16.0	16.7	V	
	V <sub>GL</sub>	-7.7	-7.0	-6.3	V	
Input signal voltage	V <sub>COM</sub>	2.8	(3.8)	4.8	V	Note 4
Input logic high voltage	V <sub>IH</sub>	0.7V <sub>CC</sub>	-	V <sub>CC</sub>	V	Note 3
Input logic low voltage	V <sub>IL</sub>	0	-	0.3V <sub>CC</sub>	V	

Note 1: Be sure to apply V<sub>CC</sub> and V<sub>GL</sub> to the LCD first, and then apply V<sub>GH</sub>.

Note 2: V<sub>CC</sub> setting should match the signals output voltage (refer to Note 3) of customer's system board .

Note 3: DCLK,HS,VS,RSTB,UPDN,STLR,MODE,DITHB.

Note 4: Typical V<sub>com</sub> is only a reference value, it must be optimized according to each LCM. Be sure to use VR



### 3.1.2 Current Consumption

(GND=AV<sub>SS</sub>=0V)

Item	Symbol	Values			Unit	Remark
		Min.	Typ.	Max.		
Current for Driver	I <sub>GH</sub>	-	0.2	0.5	mA	V <sub>GH</sub> =16.0V
	I <sub>GL</sub>	-	0.2	1.0	mA	V <sub>GL</sub> = -7.0V
	I <sub>CC</sub>	-	5.5	10.0	mA	V <sub>CC</sub> =3.3V
	I <sub>AV<sub>DD</sub></sub>	-	32.0	50.0	mA	AV <sub>DD</sub> =10.4V

### 3.1.3. Backlight Driving Conditions

Item	Symbol	Values			Unit	Remark
		Min.	Typ.	Max.		
Voltage for LED backlight	V <sub>L</sub>		18		V	Note 1
Current for LED backlight	I <sub>L</sub>		160		mA	
LED life time	-		100K	-	Hr	Note 2

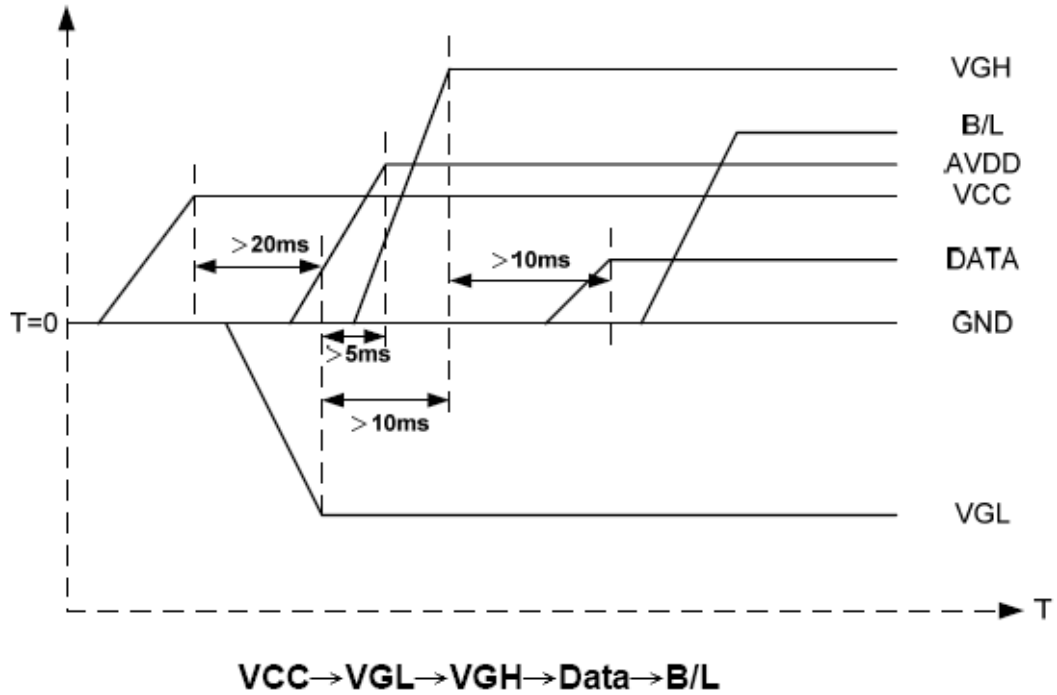
Note 1: The LED Supply Voltage is defined by the number of LED at Ta=25°C and I<sub>L</sub> =160mA.

Note 2: The “LED life time” is defined as the module brightness decrease to 50% original brightness at Ta=25°C and I<sub>L</sub> =160mA. The LED lifetime could be decreased if operating I<sub>L</sub> is larger than 160 mA.

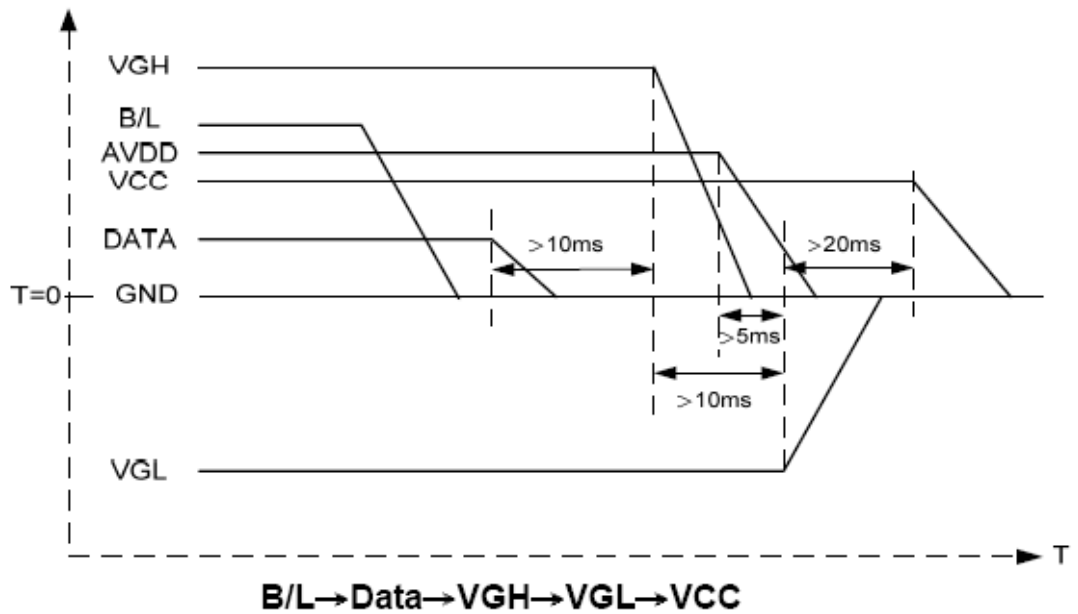


### 3.2 Power Sequence

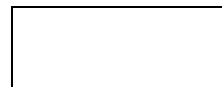
#### 3.2.1. Power on:



#### 3.2.2. Power off:



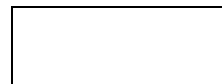
Note: Data include R0~R5, B0~B5, GO~G5, STLR,UPDN, DCLK, HS,VS,DE.



### 3.3 Timing Characteristics

#### 3.3.1 AC Electrical Characteristics

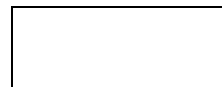
Item	Symbol	Values			Unit	Remark
		Min.	Typ.	Max.		
HS setup time	$T_{hst}$	8	-	-	Ns	
HS hold time	$T_{hhd}$	8	-	-	Ns	
VS setup time	$T_{vst}$	8	-	-	Ns	
VS hold time	$T_{vhd}$	8	-	-	Ns	
Data setup time	$T_{dsu}$	8	-	-	Ns	
Data hole time	$T_{dhd}$	8	-	-	Ns	
DE setup time	$T_{esu}$	8	-	-	Ns	
DE hole time	$T_{ehd}$	8	-	-	Ns	
VDD Power On Slew rate	$T_{POR}$	-	-	20	ms	
RSTB pulse width	$T_{Rst}$	10	-	-	us	
CLKIN cycle time	$T_{coh}$	20	-	-	Ns	
CLKIN pulse duty	$T_{cwh}$	40	50	60	%	
Output stable time	$T_{sst}$	-	-	6	us	



### 3.3.2 Timing

Item	Symbol	Values			Unit	Remark
		Min	Typ	Max		
Horizontal Display Area	Thd	-	800	-	DCLK	
DCLK Frequency	Fclk	-	40	50	MHz	
One Horizontal Line	Th	862	1056	1200	DCLK	
HS pulse width	Thpw	1	-	40	DCLK	
HS Back Porch(Blanking)	Thb	46	46	46	DCLK	
HS Front Porch	thfp	16	210	354	DCLK	

Item	Symbol	Values			Unit	Remark
		Min	Typ	Max		
Vertical Display Area	tvd	-	600	-	TH	
VS period time	tv	624	635	700	TH	
VS pulse width	tvpw	1	-	20	TH	
VS Back Porch(Blanking)	tvb	23	23	23	TH	
VS Front Porch	tvfp	1	12	77	TH	



3.3.3. Timing Diagram

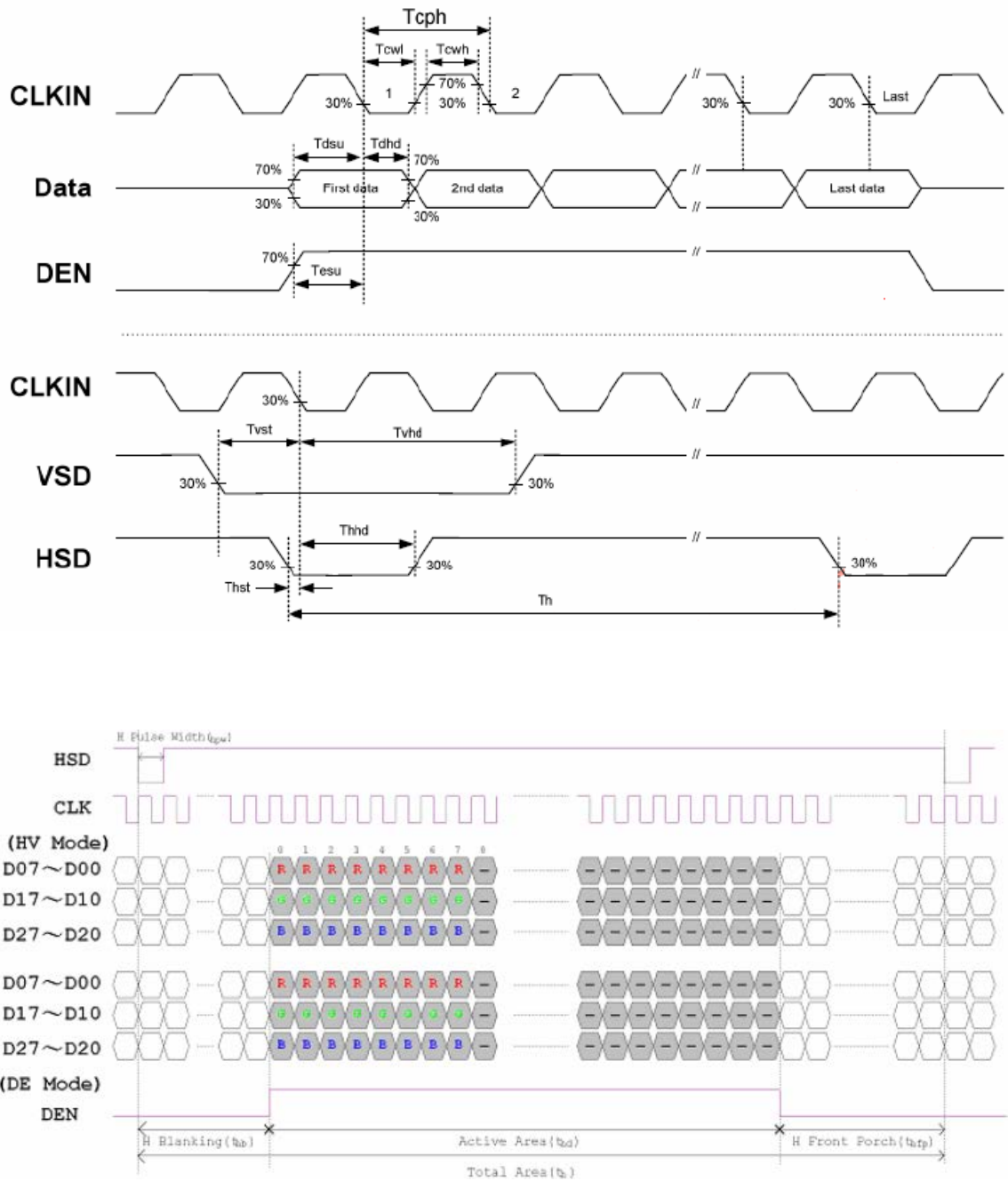
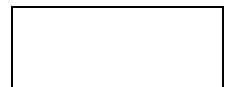


Figure 3.2 Horizontal input timing diagram.



## 4. Optical Specifications

Item	Symbol	Condition	Values			Unit	Remark
			Min.	Typ.	Max.		
View angle (CR ≥ 10)	$\theta_L$	$\Phi=180^\circ$ (9 o'clock)	60	70	-	degree	Note 1
	$\theta_R$	$\Phi=0^\circ$ (3 o'clock)	60	70	-		
	$\theta_T$	$\Phi=90^\circ$ (12 o'clock)	40	50	-		
	$\theta_B$	$\Phi=270^\circ$ (6 o'clock)	60	70	-		
Response time	$T_{ON}$	Normal $\theta=\Phi=0^\circ$	-	10	20	msec	Note 3
	$T_{OFF}$		-	15	30	msec	Note 3
Contrast ratio	CR		400	500	-	-	Note 4
Color chromaticity	$W_X$		0.26	0.31	0.36	-	Note 2
	$W_Y$		0.28	0.33	0.38	-	Note 5 Note 6
Luminance			800	1000	-	Cd/m <sup>2</sup>	Note 6
Uniformity		-	70	-	%	Note 7	

**Test Conditions:**

1.  $V_{CC}=3.3V$ ,  $I_L=480mA$  (Backlight current), the ambient temperature is 25°C.
2. The test systems refer to Note 2.



Note 1 : Definition of viewing angle range

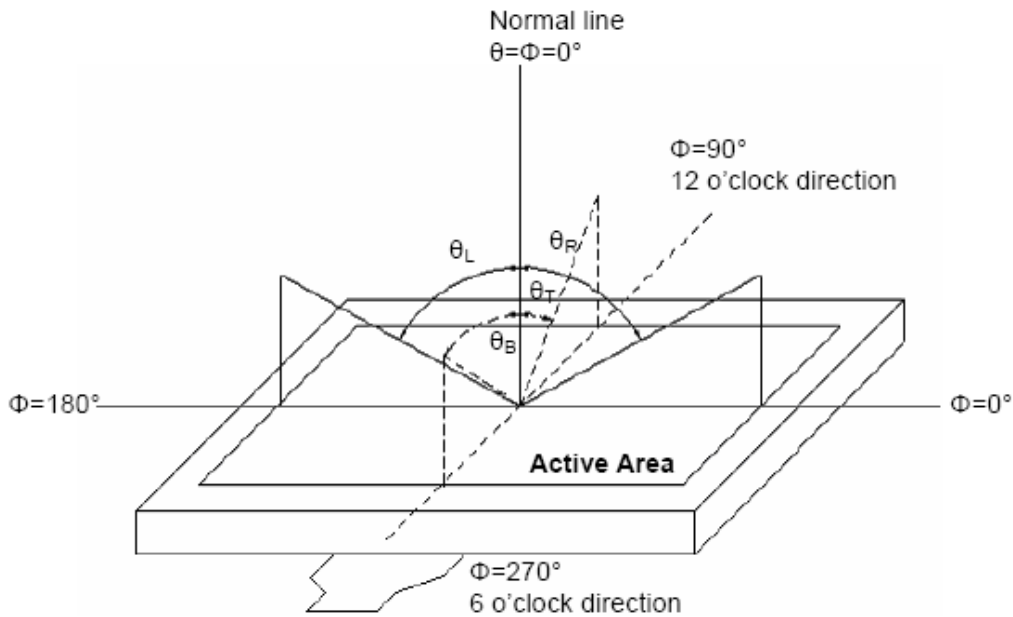


Fig. 4.1 Definition of viewing angle

Note 2: Definition of optical measurement system.

The optical characteristics should be measured in dark room. After 30 minutes operation, the optical properties are measured at the center point of the LCD screen. (Response time is measured by Photo detector TOPCON BM-7, other items are measured by BM-5A/Field of view:  $1^\circ$  /Height: 500mm.)

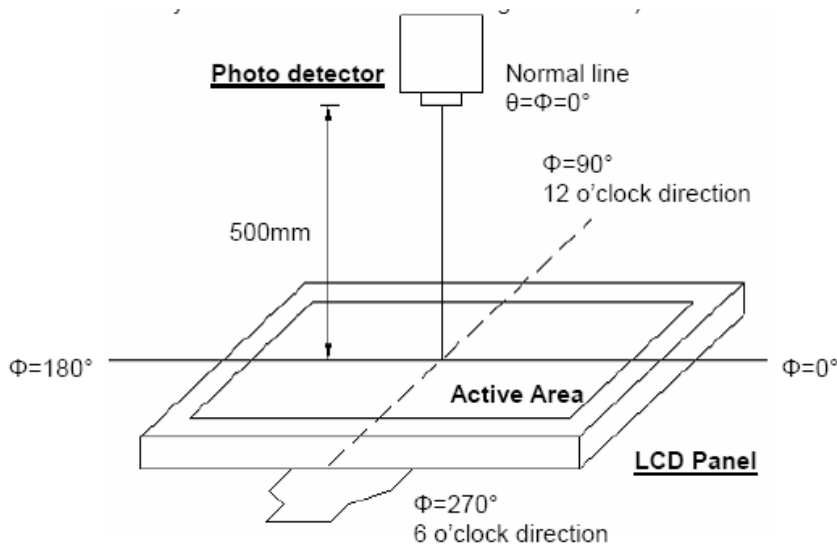
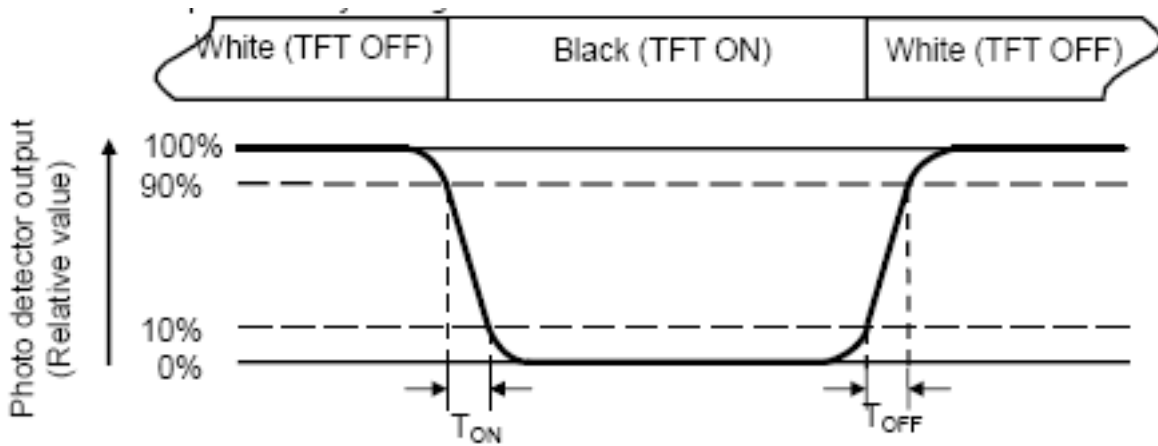




Fig. 4.2 Optical measurement system setup

Note 3: Definition of Response time

The response time is defined as the LCD optical switching time interval between “White” state and “Black” state. Rise time ( $T_{ON}$ ) is the time between photo detector output intensity changed from 90% to 10%. And fall time ( $T_{OFF}$ ) is the time between photo detector output intensity changed from 10% to 90%.



Note 4: Definition of Contrast ratio

$$\text{Contrast ratio (CR)} = \frac{\text{Luminance measured when LCD on the "White" state}}{\text{Luminance measured when LCD on the "Black" state}}$$

Note 5: Definition of color chromaticity (CIE1931)

Color coordinates measured at center point of LCD.

Note 6: All input terminals LCD panel must be ground while measuring the center area of the panel. The LED driving condition is  $I_L=180\text{mA}$ .



**Note 7: Definition of Luminance Uniformity**

Active area is divided into 9 measuring areas (Refer to Fig. 4.4 ).

Every measuring point is placed at the center of each measuring area.

$$\text{Luminance Uniformity (Yu)} = \frac{B_{\min}}{B_{\max}}$$

L ----- Active area length    W ----- Active area width

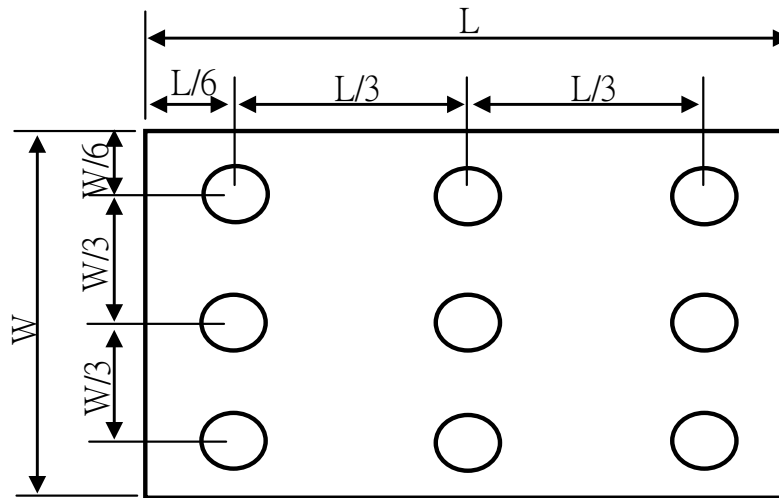


Fig. 4.4 Definition of measuring points

$B_{\max}$ : The measured maximum luminance of all measurement position.

$B_{\min}$ : The measured minimum luminance of all measurement position.



## 5. Reliability Test Items

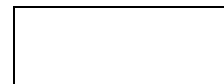
Item	Test Conditions	Remark
High Temperature Storage	Ta = 80°C      240hrs	Note 1, 4
Low Temperature Storage	Ta = -30°C      240hrs	Note 1, 4
High Temperature Operation	Ts = 70°C      240hrs	Note 2, 4
Low Temperature Operation	Ta = -20°C      240hrs	Note 1, 4
Operate at High Temperature and Humidity	+40°C, 90%RH      240hrs	Note 4
Thermal Shock	-30°C/30 min ~ +80°C/30 min for a total 100 cycles, Start with cold temperature and end with high temperature.	Note 4
Vibration Test	Frequency range:10~55Hz Stroke:1.5mm Sweep:10Hz~55Hz~10Hz 2 hours for each direction of X. Y. Z. (6 hours for total)	
Mechanical Shock	100G 6ms,±X, ±Y, ±Z 3 times for each direction	
Electro Static Discharge	± 2KV, Human Body Mode, 100pF/1500Ω	

Note 1: Ta is the ambient temperature of samples.

Note 2: Ts is the temperature of panel's surface.

Note 3: In the standard condition, there shall be no practical problem that may affect the display function. After the reliability test, the product only guarantees operation, but don't guarantee all of the cosmetic specification.

Note 4: Before cosmetic and function test, the product must have enough recovery time, at least 2 hours at room temperature.



## 6. General Precautions

### 6.1. Safety

Liquid crystal is poisonous. Do not put it in your mouth. If liquid crystal touches your skin or clothes, wash it off immediately by using soap and water.

### 6.2. Handling

1. The LCD panel is plate glass. Do not subject the panel to mechanical shock or to excessive force on its surface.
2. The polarizer attached to the display is easily damaged. Please handle it carefully to avoid scratch or other damages.
3. To avoid contamination on the display surface, do not touch the module surface with bare hands.
4. Keep a space so that the LCD panels do not touch other components.
5. Put cover board such as acrylic board on the surface of LCD panel to protect panel from damages.
6. Transparent electrodes may be disconnected if you use the LCD panel under environmental conditions where the condensation of dew occurs.
7. Do not leave module in direct sunlight to avoid malfunction of the ICs.

### 6.3. Static Electricity

1. Be sure to ground module before turning on power or operating module.
2. Do not apply voltage which exceeds the absolute maximum rating value.

### 6.4. Storage

1. Store the module in a dark room where must keep at  $25\pm 10^{\circ}\text{C}$  and 65%RH or less.
2. Do not store the module in surroundings containing organic solvent or corrosive gas.
3. Store the module in an anti-electrostatic container or bag.

### 6.5. Cleaning

1. Do not wipe the polarizer with dry cloth. It might cause scratch.
2. Only use a soft sloth with IPA to wipe the polarizer, other chemicals might permanent damage to the polarizer.



# 7. Mechanical Drawing

